

R08 Gearhead





Enhance the overall strength and torque density of your motor drive system with the new R08 planetary gearhead in a compact package. With additional features such as shock endurance and greater load bearing capacity, the R08 promises a reliable product with a longer life. The strength and reliability of the R08 makes it a popular choice in demanding applications like medical implantable and insulin pumps, imaging equipment and biotic fingers. With its robust design features, the R08 is a good fit for security & access control, aerospace & defense, and other industrial instrumentation applications.

OUTPUT AND PERFORMANCE

- Max radial load : 10N (@ 4mm from the mounting face)
- Max torque dynamic/static: 0.05/0.15 Nm
- 8mm--upto 4 stages--which can be extended to higher ratios of 4096 (6 stages)
- Ratio/Length/Efficiency
 - Ratio ranges from 4:1 to 256:1
 - Length of gearbox ranges from 9.4 to 19.9mm
 - Efficiency ranges from 85 to 60%
- Customization on request

KEY FEATURES

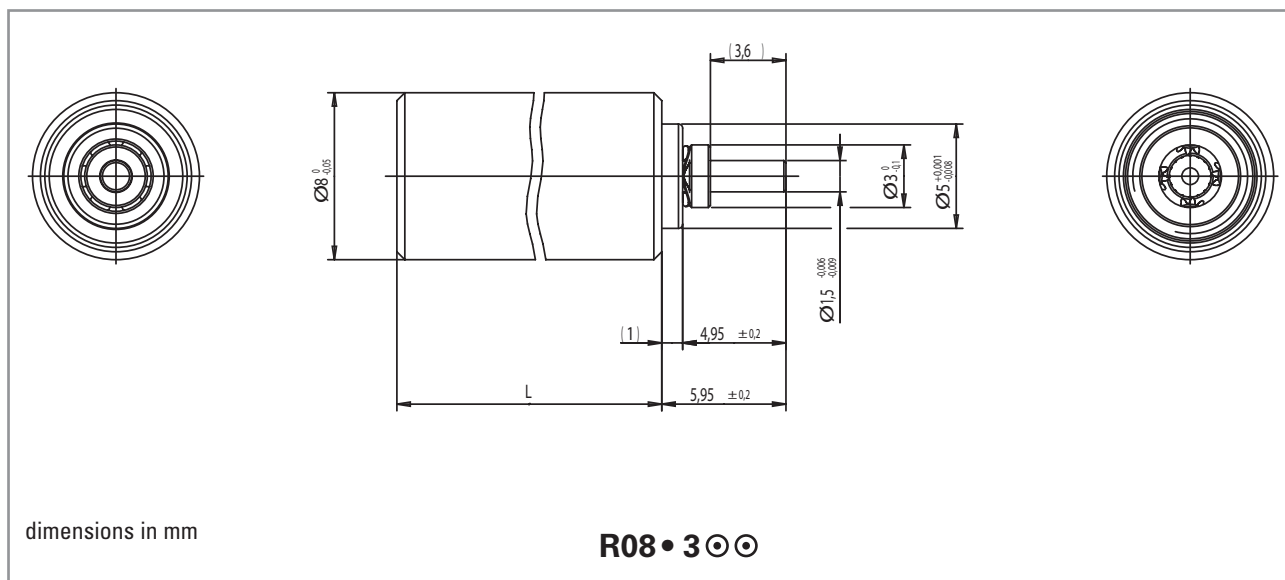
- High load carrying capacity provides better strength
- High continuous torque enhances power density of the overall composite
- Higher shock absorbing capacity provides increased reliability with longer life
- Monobloc shaft and metallic tube creates increased durability and a noise reduction
- Can be coupled with Brush DC, Brushless and Stepper motors in their respective frame sizes

Medical: Insulin & implantable pumps, imaging machines, collimators, biotic fingers, defibrillators	Instrumentation /Measurement: Industrial robotics, surveying equipment	Security & Access: Door locks, cameras, alarm systems, zoom lens and spy cameras	Aerospace & Defense: Small robots for underwater particle or mine detection
			



0.05 Nm

Planetary Gearhead



Ratio	⊙ ⊙	4	16	64	256
No. of gear stages		1	2	3	4
Direction of Rotation		=	=	=	=
Efficiency		0.85	0.75	0.65	0.60
L (mm)		9.35	12.85	16.35	19.85
Mass (g)		1.6	2.2	2.8	3.6
Available with motor					
08 G 61 • 5					
08 GS 61 • 7					
P010 • 02					
8 mm BLDC(Std)					

Characteristics		R08 • 3	R08 2R • 3
Bearing Type		sleeve	ball
Max. static torque	mNm (oz-in)	0.15 (21.4)	0.15 (21.4)
Max. radial force at 4 mm from mounting face	N (lb)	5 (1.1)	10 (2.2)
Max. axial force	N (lb)	5 (1.1)	10 (2.2)
Force for press-fit	N (lb)	100 (23)	100 (23)
Average backlash at no-load		1°	1°
Average backlash at 0.1 Nm		3°	3°
Radial play	μm	≤50	≤50
Axial play	μm	50-150	≤50
Max. recom. input speed	rpm	12000	12000
Operating temperature range	°C (°F)	-30...+85 (-22...+185)	

