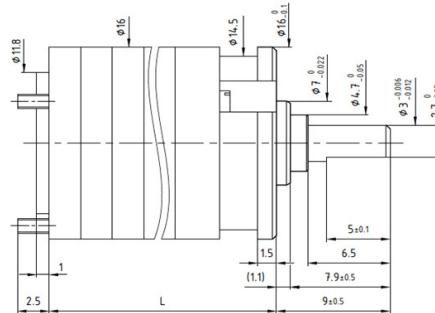
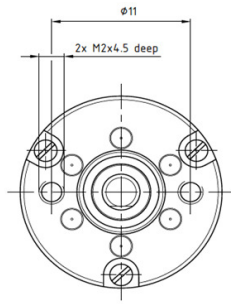


B16

Spur Gearbox

Ø 16mm

0.12 Nm



Dimensions in mm

Ratio	****	5	9	15	27	45	81	135	141	243	405	729	1215	2187
1	Number of Gear Stages	2	2	3	3	4	4	5	5	5	6	6	7	7
2	Direction of Rotation	=	=	≠	≠	=	=	≠	≠	≠	=	=	≠	≠
3	Efficiency	0.81	0.81	0.73	0.73	0.65	0.65	0.59	0.59	0.59	0.53	0.53	0.48	0.48
4	L (mm)	10.5	10.5	13	13	15.5	15.5	18	18	18	20.5	20.5	23	23
5	Weight g (oz)	7 (0.246)	7 (0.246)	8 (0.282)	8 (0.282)	9 (0.317)	9 (0.317)	10 (0.352)	10 (0.352)	10 (0.352)	11 (0.388)	11 (0.388)	12 (0.423)	12 (0.423)
6	Available with Motor - L2 = Length with motor (mm)													
	16C18	29.2	29.2	31.7	31.7	34.2	34.2	36.7	36.7	36.7	39.2	39.2	41.7	41.7
	16N28	38.5	38.5	41	41	43.5	43.5	46	46	46	48.5	48.5	51	51
	16N78	41.5	41.5	44	44	46.5	46.5	49	49	49	51.5	51.5	54	54
	16G88	41.5	41.5	44	44	46.5	46.5	49	49	49	51.5	51.5	54	54
	17S78	32.2	32.2	34.7	34.7	37.2	37.2	39.7	39.7	39.7	42.2	42.2	44.7	44.7
	17N78	39.4	39.4	41.9	41.9	44.4	44.4	47.9	47.9	47.9	49.4	49.4	51.9	51.9
	P110	29.5	29.5	32	32	34.5	34.5	37	37	37	39.5	39.5	42	42
	16DCP/17DCT	39.5	39.5	42	42	44.5	44.5	47	47	47	49.5	49.5	52	52

Characteristics		B16 · 0 ·	B16 2R · 0 ·
7	Shaft Bearings	Sleeve	Ball Bearing
8	Maximum Static Torque	Nm (oz-in)	0.4 (56)
9	Maximum Radial Force @ 8mm from mounting face	N (lb)	5 (1.1)
10	Maximum Axial Force	N (lb)	10 (2.2)
11	Maximum Press Fit Force	N (lb)	100 (23)
12	Average Backlash @ no-load		1.5°
13	Average Backlash @ 0.3 Nm		3°
	Shaft Play:		
14	-radial	µm	≤ 20
15	-axial	µm	50-150
16	Maximum Recommended Input Sp _i	rpm	8000
17	Operating Temperature Range:	°C (°F)	-30 to +65 (-22 to +150)

Motor + gearbox = L2

