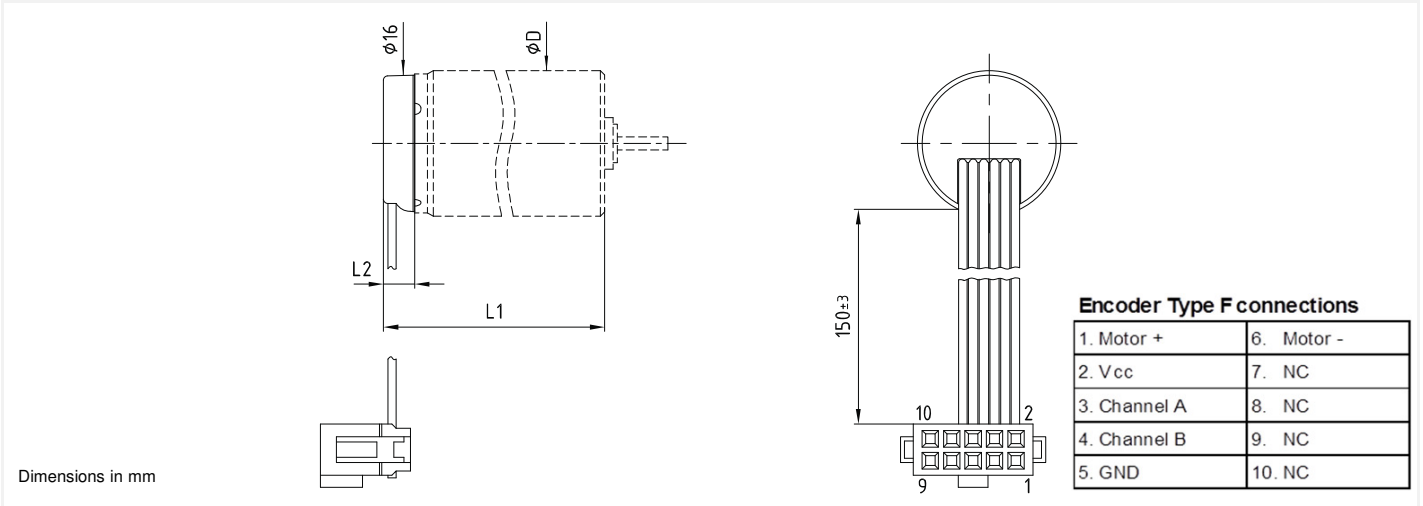


F16

Integrated Magnetic Encoder



Characteristics @ 22°C			
1	Number of Lines Available	16	LPR
2	Supply Voltage	3.5 to 15	Volt
3	Supply Current	Typical 6	mA
	Rise Time	5	μ s
	Fall Time	0.2	μ s
4	Output Signal	Two channels square wave	
5	Electrical Phase Shift	90 ± 40	degree
6	Signal Ratio	50 ± 25	%
7	Maximum Count Frequency	15	kHz
8	Operating Temperature Range:	-20 to +85	°C (°F)
9	Code Wheel Moment of Inertia	0.1	$10^{-7} \times \text{kgm}^2$
10	Weight	Varies by motor size. Contact us. g (oz)	

Available on motor types	16C 18	16N28	17S78	17N78	22N28	22V28
Length with motor - mm (in)	18.6 (0.73)	30 (1.18)	20.2 (0.795)	27.8 (1.09)	34 (1.34)	36.3 (1.43)

Typical encoder output signal

