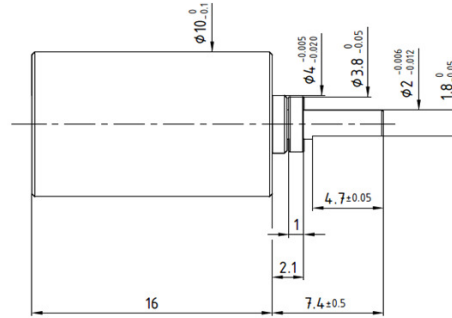
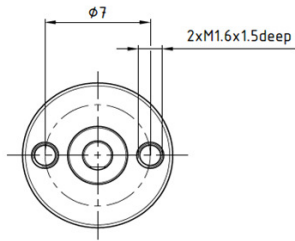


R10

Planetary Gearbox

Ø 10mm

0.1 Nm



Dimensions in mm

| Ratio | **** | * | | | * | | * |
|-------|--|-----------|-----------|-----------|-----------|-----------|-----------|
| Ratio | **** | 4 | 16 | 64 | 256 | 1024 | 4096 |
| 1 | Number of Gear Stages | 1 | 2 | 3 | 4 | 5 | 6 |
| 2 | Direction of Rotation | = | = | = | = | = | = |
| 3 | Efficiency | 0.9 | 0.8 | 0.7 | 0.65 | 0.6 | 0.5 |
| 4 | L(mm) | 9 | 12.5 | 16 | 19.5 | 23 | 26.5 |
| 5 | Weight g (oz) | 3 (0.105) | 4 (0.141) | 5 (0.176) | 6 (0.211) | 7 (0.246) | 8 (0.282) |
| 6 | Available with Motor - L2 = Length with motor (mm) | | | | | | |
| | 08GS61 | 25.6 | 29.1 | 32.6 | 36.1 | 39.6 | 43.1 |
| | 08G61 | 28.6 | 32.1 | 35.6 | 39.1 | 42.6 | 46.1 |
| | P010 | 25.4 | 28.9 | 32.4 | 35.9 | 39.4 | 42.9 |
| | 10NS61 | 27 | 30.5 | 34 | 37.5 | 41 | 44.5 |
| | 12G88 | 37.2 | 40.7 | 44.2 | 47.7 | 51.2 | 54.7 |

* Ratio available upon request. Please contact us.

| Characteristics | | R10 • 200 • | |
|-----------------|---|------------------|--------------------------|
| 7 | Shaft Bearings | | Sleeve |
| 8 | Maximum Static Torque | Nm (oz-in) | 0.15 (21.2) |
| 9 | Maximum Radial Force @ 8mm from mounting face | N (lb) | 2 (0.45) |
| 10 | Maximum Axial Force | N (lb) | 5 (1.125) |
| 11 | Maximum Press Fit Force | N (lb) | 10 (2.25) |
| 12 | Average Backlash @ no-load | | 1° |
| 13 | Average Backlash @ 0.3 Nm | | 3° |
| Shaft Play: | | | |
| 14 | -radial | µm | ≤ 25 |
| 15 | -axial | µm | 50-150 |
| 16 | Maximum Recommended Input Speed | rpm | 10,000 |
| 17 | Operating Temperature Range: | °C (°F) | -30 to +65 (-22 to +150) |

Motor + gearbox = L2

