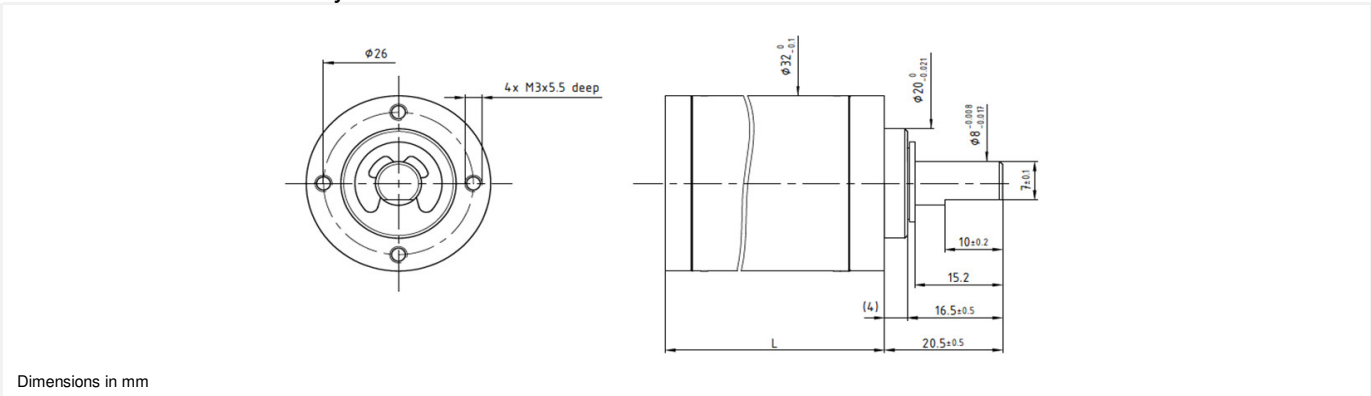


R32

Planetary Gearbox

Ø 32mm

4.5 Nm



Dimensions in mm

Ratio	****	5.75	17.4	24	33	72.3	99.8	138	190	301	416	574	792	1090
1	Number of Gear Stages	1	2	2	2	3	3	3	3	4	4	4	4	4
2	Direction of Rotation	=	=	=	=	=	=	=	=	=	=	=	=	=
3	Efficiency	0.8	0.75	0.75	0.75	0.65	0.65	0.65	0.65	0.55	0.55	0.55	0.55	0.55
4	L(mm)	32	38	38	38	44	44	44	44	50	50	50	50	50
5	Weight g (oz)	124 (4.373)	145 (5.114)	145 (5.114)	145 (5.114)	175 (6.172)	175 (6.172)	175 (6.172)	175 (6.172)	205 (7.231)	205 (7.231)	205 (7.231)	205 (7.231)	205 (7.231)
6	Available with Motor - L2 = Length with motor (mm)													
	25GST82	75.5	81.5	81.5	81.5	87.5	87.5	87.5	87.5	93.5	93.5	93.5	93.5	93.5
	25GT82	85.45	91.45	91.45	91.45	97.45	97.45	97.45	97.45	103.45	103.45	103.45	103.45	103.45
	28L18/28	75.5	81.5	81.5	81.5	87.5	87.5	87.5	87.5	93.5	93.5	93.5	93.5	93.5
	28LT12	73.2	79.2	79.2	79.2	85.2	85.2	85.2	85.2	91.2	91.2	91.2	91.2	91.2
	28DT12	96.6	102.6	102.6	102.6	108.6	108.6	108.6	108.6	114.6	114.6	114.6	114.6	114.6
	30GT82	94.9	100.9	100.9	100.9	106.9	106.9	106.9	106.9	112.9	112.9	112.9	112.9	112.9
	35NT32/82	89.2	95.2	95.2	95.2	101.2	101.2	101.2	101.2	107.2	107.2	107.2	107.2	107.2
	35GLT2R82	99.2	105.2	105.2	105.2	111.2	111.2	111.2	111.2	117.2	117.2	117.2	117.2	117.2
	22ECT60	92	98	98	98	104	104	104	104	110	110	110	110	110
	22ECT82	114	120	120	120	126	126	126	126	132	132	132	132	132
Characteristics		R32 2R • 0 •												
7	Shaft Bearings	Ball bearing												
8	Maximum Static Torque	Nm (oz-in)		20 (2832)										
9	Maximum Radial Force													
	@ 8mm from mounting face	N (lb)		180 (40.5)										
10	Maximum Axial Force	N (lb)		150 (33.75)										
11	Maximum Press Fit Force	N (lb)		500 (112.5)										
12	Average Backlash @ no-load	1°												
13	Average Backlash @ 0.3 Nm	2°												
	Shaft Play:													
14	-radial	µm		≤ 10										
15	-axial	µm		≤ 10										
16	Maximum Recommended Input Speed	rpm		6000										
17	Operating Temperature Range:	°C (°F)		-30 to +85 (-22 to +185)										

Motor + gearbox = L2

