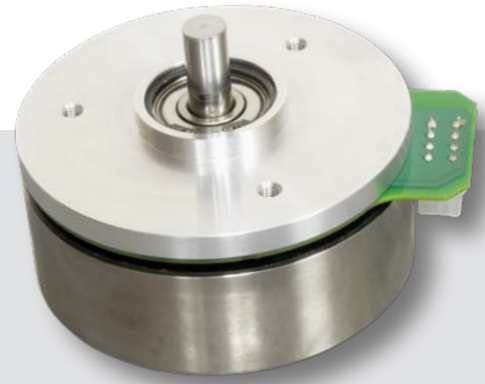


Brushless DC Slotted Flat Motors 90ECF with Outer Rotor



Extremely High Torque and Reduced Complexity in a Flat Envelope

The 90ECF brushless DC flat slotted motor is the newest – and largest – motor to join our flat motor portfolio. Featuring a performance-optimized design that utilizes an outer rotor configuration with an overall body length of 40mm, this motor delivers high power density and smooth output torque in a compact package.

A standout characteristic of the 90ECF is its ability to provide maximum continuous torque up to 1Nm, making it an ideal choice for miniature applications that need direct drive solutions. This not only facilitates the elimination of motor accessories like gearheads in certain cases, but also assists in reducing the motion system's overall complexity, thereby providing a lower cost of ownership.

The 90ECF's high torque capabilities and cost-optimized nature mean that it is an ideal solution for a variety of medical and industrial applications. These include robotic applications like wheel drives, exoskeletons, and underwater UAVs; oxygen concentrators; and aerospace and defense applications such as drones and military robots.

✓ High torque up to 1Nm

✓ 40mm body length

✓ Outer rotor configuration

Key Features

- Max continuous torque up to 1Nm
- Overall body length of 40mm
- Sensored & sensorless options
- 3-Phase BLDC

Applications

- Wheel drives
- Drones
- Military robots
- Bionics & exoskeleton systems
- Surgical robots
- Service robots
- Oxygen concentrators
- Material handling

Customization

- Connectors
- Custom shafts - flats, knurling, diameter, length
- Coil modifications - resistance and inductance
- Different optimizations - speed or direction
- Without hall sensors

