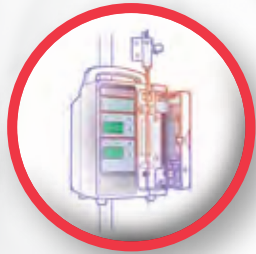


Portescap



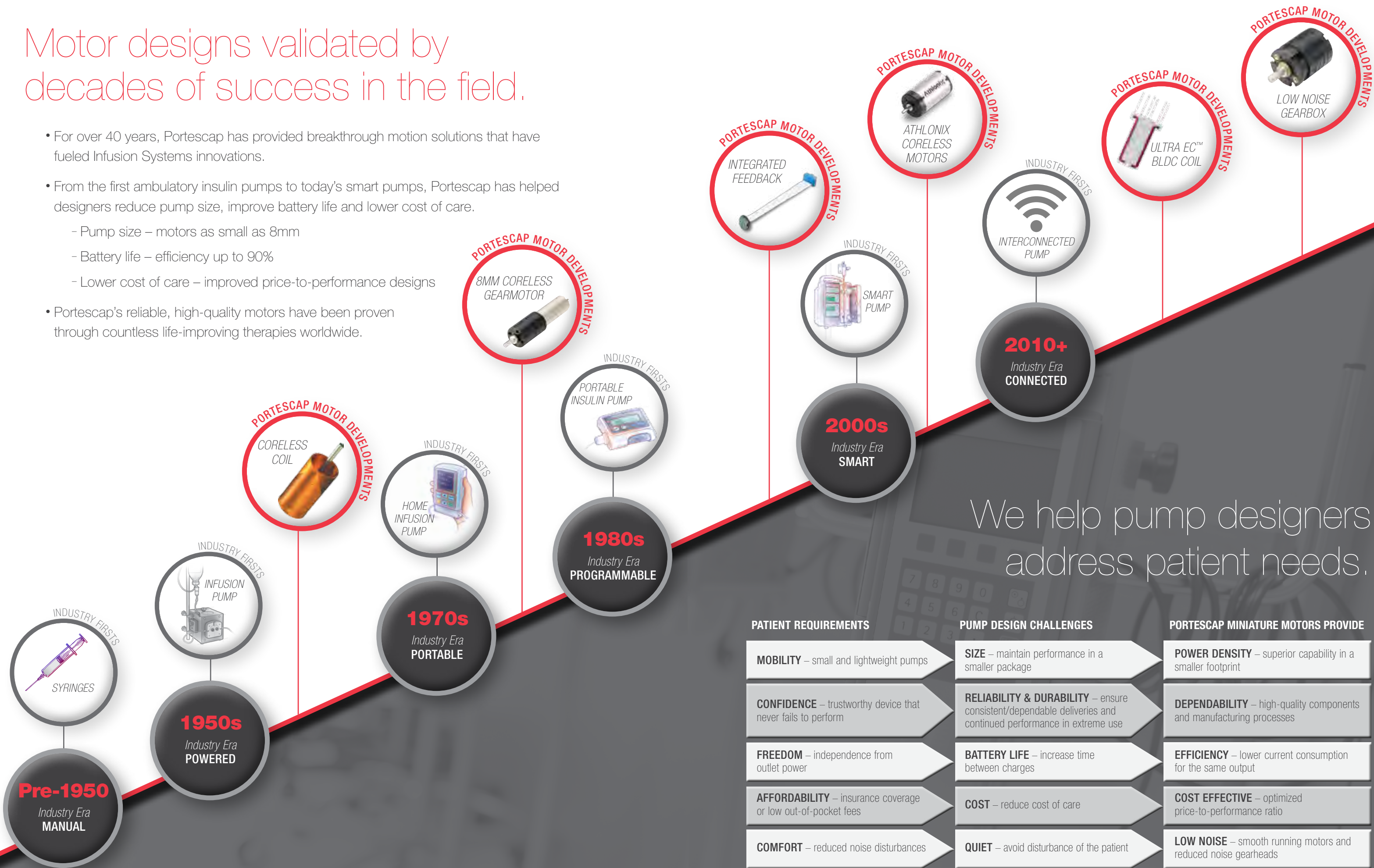
Precision Motors for Infusion Systems

*Optimized performance for reliability,
versatility and patient comfort*



Motor designs validated by decades of success in the field.

- For over 40 years, Portescap has provided breakthrough motion solutions that have fueled Infusion Systems innovations.
- From the first ambulatory insulin pumps to today's smart pumps, Portescap has helped designers reduce pump size, improve battery life and lower cost of care.
 - Pump size – motors as small as 8mm
 - Battery life – efficiency up to 90%
 - Lower cost of care – improved price-to-performance designs
- Portescap's reliable, high-quality motors have been proven through countless life-improving therapies worldwide.



We help pump designers address patient needs.

PATIENT REQUIREMENTS

- MOBILITY** – small and lightweight pumps
- CONFIDENCE** – trustworthy device that never fails to perform
- FREEDOM** – independence from outlet power
- AFFORDABILITY** – insurance coverage or low out-of-pocket fees
- COMFORT** – reduced noise disturbances

PUMP DESIGN CHALLENGES

- SIZE** – maintain performance in a smaller package
- RELIABILITY & DURABILITY** – ensure consistent/dependable deliveries and continued performance in extreme use
- BATTERY LIFE** – increase time between charges
- COST** – reduce cost of care
- QUIET** – avoid disturbance of the patient

PORTESCAP MINIATURE MOTORS PROVIDE

- POWER DENSITY** – superior capability in a smaller footprint
- DEPENDABILITY** – high-quality components and manufacturing processes
- EFFICIENCY** – lower current consumption for the same output
- COST EFFECTIVE** – optimized price-to-performance ratio
- LOW NOISE** – smooth running motors and reduced noise gearheads

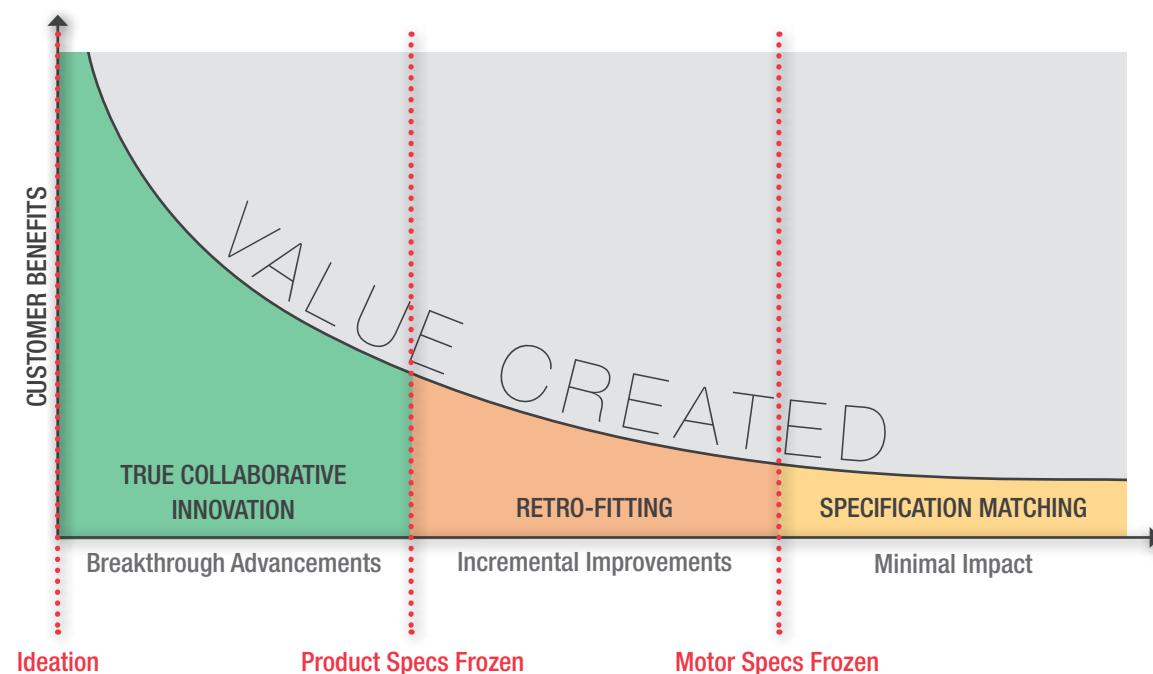
Collaborative innovation. Dedicated resources.

Committed resources from day one to help you achieve an optimal design with **reduced time to market**.

Early engagement with Portescap's Infusion Systems Motor Design Engineers **accelerates your design process** and opens doors for unique motion concepts.

Our Design Engineers are available for **on-site consultations** as early as your ideation stage, when they can deliver the most value for a successful final design.

THE BENEFITS OF EARLY ENGAGEMENT WITH PORTESCAP



TRUE COLLABORATIVE INNOVATION BENEFITS

- Push industry boundaries
- Differentiated & patentable concepts
- Design simplification & cost reduction
- Flexibility to use readily-available components
- Design for manufacturability
- Leverage 40+ years of infusion pump motor experience
- Rapid POC samples

Reliable partner. Reliable motors.

The Fortive Business System

- As part of the Fortive Corporation, Portescap utilizes the Fortive Business System which enforces a culture of excellence, innovation, quality, on-time delivery and cost-effectiveness.
- Continuous improvement is our way of life and the engine that constantly drives our performance.
- All global Fortive manufacturing sites follow these principles and aggressive targets to ensure consistent superior results.



R&D

Design & optimization of motors, gearheads and encoders

In-house design team of 20+ electrical and mechanical engineers

FEA Analysis – electromagnetic and gear

Tool & process-based design (including DFMEA & PFMEA)

Rapid prototyping



Validation & Verification

Life analysis software (PLM, Weibull++, Reliasoft)

Life testing lab (dynamic torque test bench)

Motor performance measurement – speed, torque, current, BEMF

Vibration analyzer

Acoustic test chamber (30dB ambient, FFT)

Environmental chamber (-40°C to +180°C)



Manufacturing

On-site machine shop, winding and molding

High customization and product design integration

Low to high volume

Lean manufacturing, visual management and process controls

ESD safe assembly room

Automated 100% final inspection on all products

Traceability, clean room and ISO 13485 available upon request

Superior pump designs
begin with a superior motor.

Coreless DC Motors

high efficiency
and long
brush life

Stepper Motors

cost-effective
and simple
control

Brushless DC Motors

patented Ultra
EC™ Coil for
longer life

Encoders

integrated
feedback

Gearheads

low noise
designs

SUCCESSFUL INFUSION SYSTEMS DESIGNS

- Portable
- Discreet
- Reliable
- Cost Effective

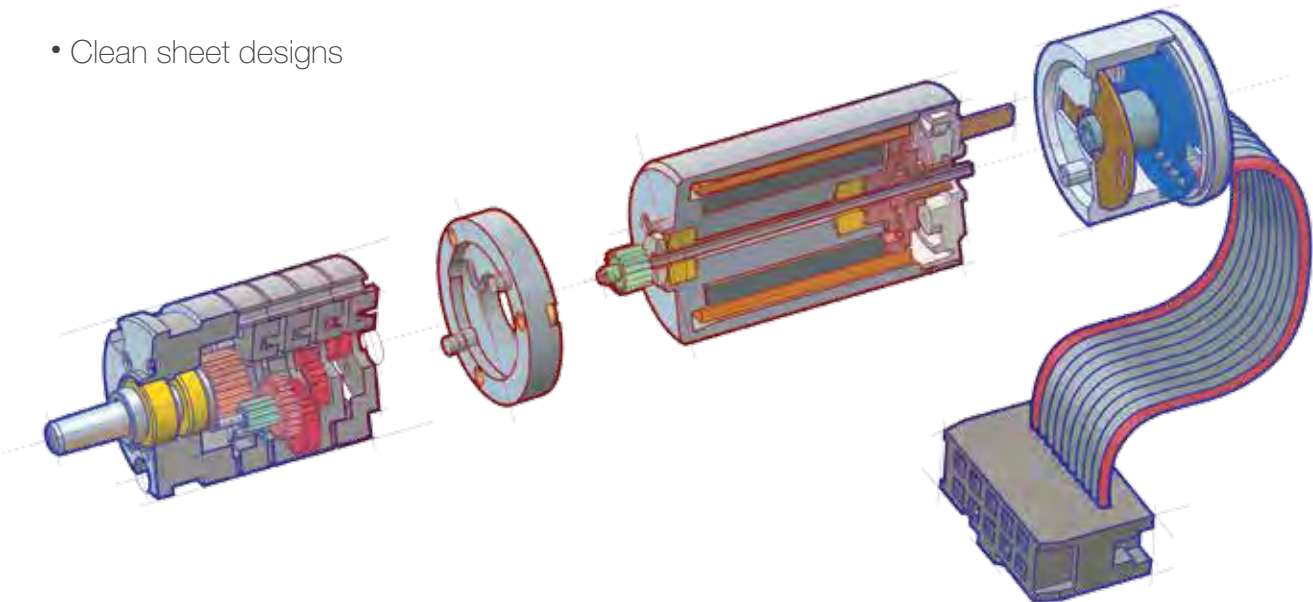
CHOOSE THE RIGHT TECHNOLOGY
FOR YOUR APPLICATION

	BRUSHED DC	BLDC SLOTLESS	STEPPER
EFFICIENCY	● ● ●	● ●	●
LIFETIME	● ●	● ● ● ●	● ● ● ●
POWER DENSITY	● ● ●	● ● ● ●	●
NOISE	● ● ● ●	● ● ● ●	●
RELIABILITY	● ●	● ● ● ●	● ●

Customization:
From minor modifications to
complete motor designs.

Need something special?
With our iterative design capabilities and flexible manufacturing processes, Portescap can quickly develop the right motor configuration for your specific application requirements. Motor customization not only helps shorten your assembly time, but also helps reduce the total cost of ownership.

- Adaptation of mounting plates
- Custom output shafts to integrate with your pump mechanism
- Custom feedback and connections to interface with your controls
- Custom windings to match your drive voltage
- Custom gear ratios to optimize speed & torque performance
- Clean sheet designs



*Rely on Portescap for
turn-key custom solutions.*

More than just motors.

Originated in Switzerland and driven by a passion for precision, customer-centric innovation, technical excellence and best-quality service since 1931, Portescap has become a recognized leading expert in miniature motors and precision motion control solutions for the infusion systems market.

Motion solutions for better battery-powered devices.



North America
110 Westtown Road
West Chester, Pennsylvania 19382
Tel: +1 610 235 5499
sales.america@portescap.com
portescap.com

South America
Avenida Tamboré, 1077
Barueri – São Paulo – Brasil
06460-914
Tel: +55 11 3616 0199
vendas@portescap.com
portescap.com.br

Europe
Portescap S.A.
Rue Jardinière 155, Case Postale
CH-2301 La Chaux-de-Fonds
Switzerland
Tel: +41 32 925 61 11
sales.europe@portescap.com
portescap.de

China
4th Floor, Building 9, No 518
North Fuquan Road,
Changning District
Shanghai, 200335
P.R. China
Tel: +86 21 8028 1516
sales.asia@portescap.com
portescapmotor.cn

Japan
Portescap Co., Ltd.
Shinagawa INTERCITY, Tower B 7F
2-15-2, Konan, Minato-ku
Tokyo 108-6107
Tel: +81 3 5479 7701
sales.asia@portescap.com
portescap.co.jp

Korea
#401, Hankuk scout building,
18-3 Yeouido-dong, Yeongdeungpo-gu
Seoul, Korea 150-914
Tel: +82 2 785 4757
sales.asia@portescap.com
portescap.kr

India
Portescap
Unit No. 2, SDF-1
SEEPZ-SEZ
Andheri East, Mumbai 400 096
India
Tel: +91 22 4200 6200
+91 22 4200 6201
sales.asia@portescap.com
portescap.com

To speak with a Design Engineer, please **call us today**. Or use the email address below to request a return call.

InfusionSystems@portescap.com



Portescap

©2017, Portescap. All rights reserved.

Specifications subject to change without notice. It is the responsibility of the product user to determine the suitability of a product for a specific application. All trademarks property of their respective owners.

Lit code: 0202 V10102017