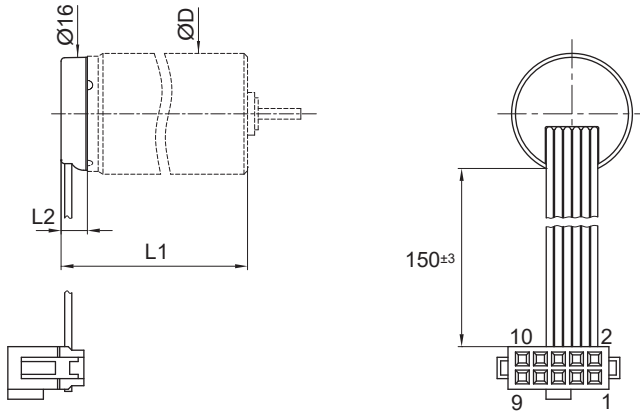


F16

Integrated Magnetic Encoder



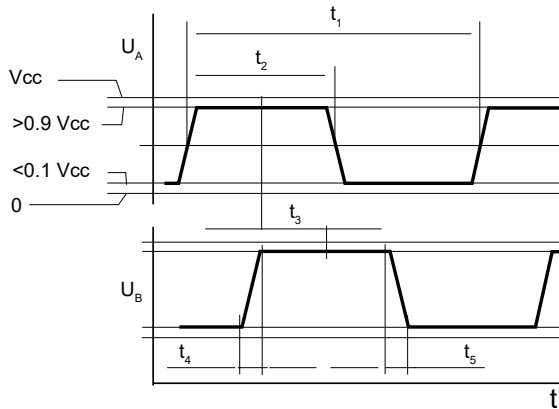
Dimensions in mm

Encoder Type F Connections	
1	Motor +
2	Vcc
3	Channel A
4	Channel B
5	GND
6	Motor -
7	NC
8	NC
9	NC
10	NC

Electrical Data	Characteristics @ 22° C	Unit
1 Number of Lines Available	16	LPR
2 Supply Voltage	3.5 to 15	Volt
3 Supply Current Typical	6	mA
4 Rise Time	5	µs
5 Fall Time	0.2	µs
6 Output Signal	Two channels square wave	
7 Electrical Phase Shift	90 ± 40	degree
8 Signal Ratio	50 ± 25	%
9 Maximum Count Frequency	15	kHz
10 Operating Temperature Range:	-20 to +85 (-4 to +185)	°C (°F)
11 Code Wheel Moment of Inertia	0.1	10 <sup>-7</sup> x kgm <sup>2</sup>
12 Weight	Varies by motor size. Contact us.	g (oz)

Available on Motor Types	16C 18	17S78	17N78
Length with motor mm (in)	18.6 (0.73)	20.2 (0.795)	27.8 (1.09)

Typical Encoder Output Signal



$t_1$	Period
$t_2/t_1$	Signal Ratio
$t_3$	Phase Shift
$t_4$	Rise Time
$t_5$	Fall Time