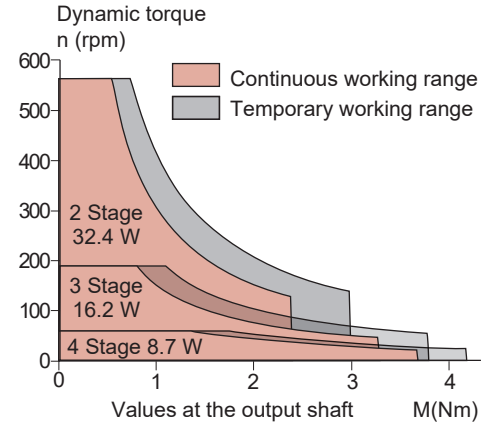
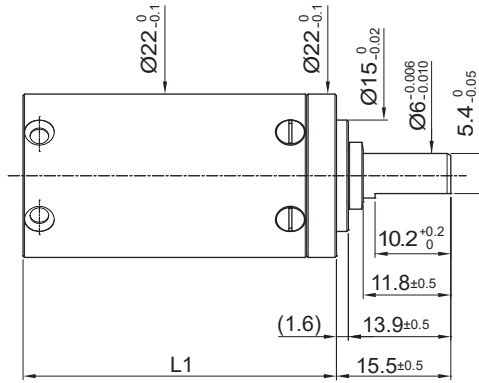
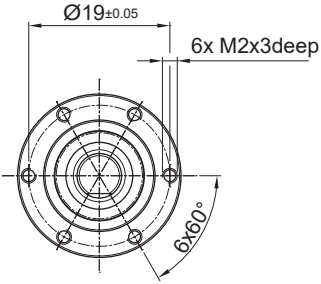


**R22HT**

Ø 22 mm • Planetary Gearbox • 3.7 Nm



Dimensions in mm

Ratio		10.9	16.4	36.5	61.7	88.8	120.9	211.4	294.4	423.9
		12.4	17.9	41.2	63.7	96.7	136.7	222.6	316.1	455.2
		14.1	19.2	46.6	67.1	103.8	154.6	231.2	320.6	479.5
		14.5	20.2	48.2	72.1	109.4	159.8	239.0	333.0	522.1
			23.7	52.7	75.9	127.9	174.8	251.8	344.2	560.6
			29.2	54.5	78.5	157.5	180.8	260.3	362.6	590.5
				59.4	84.3		196.8	270.3	369.6	690.4
							197.8	279.5	389.3	850.3
							204.4	284.8	410.1	
1	Number of Gear Stages	2	2	3	3	3	4	4	4	4
2	Direction of Rotation	=	=	=	=	=	=	=	=	=
3	Efficiency	0.82	0.82	0.72	0.72	0.72	0.62	0.62	0.62	0.62
4	L (mm)	28.3	28.3	35.1	35.1	35.1	41.9	41.9	41.9	41.9
5	Weight	g	52	52	66	66	81	81	81	81
		(oz)	(1.834)	(1.834)	(2.328)	(2.328)	(2.857)	(2.857)	(2.857)	(2.857)

<b>6 Available with Motor – L2 - Length with motor (mm)</b>										
22DCP / 22DCT / 22N78 / 24DCT	62.7	62.7	69.5	69.5	69.5	76.3	76.3	76.3	76.3	76.3
22N98	64.6	64.6	71.4	71.4	71.4	78.2	78.2	78.2	78.2	78.2
23GST2R	68.7	68.7	75.5	75.5	75.5	82.3	82.3	82.3	82.3	82.3
25GT2R	84.2	84.2	91	91	91	97.8	97.8	97.8	97.8	97.8
25GST2R	74.2	74.2	81	81	81	87.8	87.8	87.8	87.8	87.8
22ECT35	63.3	63.3	70.1	70.1	70.1	76.9	76.9	76.9	76.9	76.9
22ECP45	73.3	73.3	80.1	80.1	80.1	86.9	86.9	86.9	86.9	86.9
22ECT48	76.3	76.3	83.1	83.1	83.1	89.9	89.9	89.9	89.9	89.9
22ECP60 / 22ECT60	88.3	88.3	95.1	95.1	95.1	101.9	101.9	101.9	101.9	101.9
22ECT82	110.3	110.3	117.1	117.1	117.1	123.9	123.9	123.9	123.9	123.9

Characteristics	Unit	R22HT 2R . 0 .								
7 Shaft Bearings		Ball bearing								
8 Maximum Continuous Torque	Nm (oz-in)	2.4 (340)	2.4 (340)	3.3 (467)	3.3 (467)	3.3 (467)	3.7 (524)	3.7 (524)	3.7 (524)	3.7 (524)
9 Maximum Continuous Power	W	32.4	32.4	16.2	16.2	16.2	8.7	8.7	8.7	8.7
10 Maximum Static Torque	N (lb)	3 (425)	3 (425)	3.8 (538)	3.8 (538)	3.8 (538)	4.2 (595)	4.2 (595)	4.2 (595)	4.2 (595)
11 Maximum Radial Force @ 10 mm from mounting face	N (lb)	150 (33.7)								
12 Maximum Axial Force	N (lb)	100 (22.4)								
13 Maximum Press-Fit Force	N (lb)	120 (26.9)								
14 Average Backlash @ no-load	(deg)	1.2°	1.2°	1.6°	1.6°	1.6°	1.9°	1.9°	1.9°	1.9°
15 Shaft Play:										
-Radial (@ 10 mm from flange)	µm	≤ 200								
-Axial	µm	<30								
16 Maximum Recommended Input Speed	rpm	12,000								
17 Operating Temperature Range:	°C (°F)	-30 to +85 (-22 to +185)								

