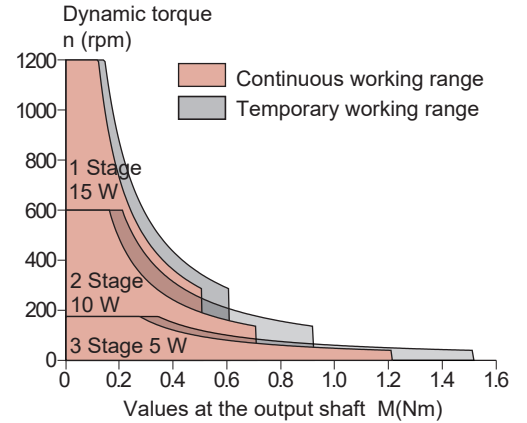
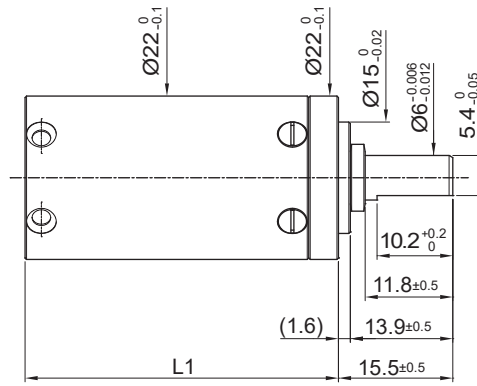
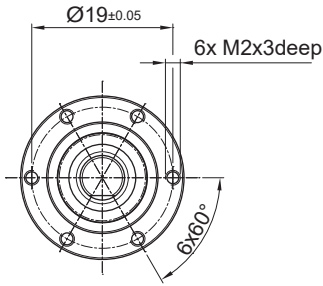


R22T

Ø 22 mm • Planetary Gearbox • 1.5 Nm



Dimensions in mm

Ratio	5.4	14.1	29.2	52.7	157.5	
1 Number of Gear Stages	1	2	2	3	3	
2 Direction of Rotation	=	=	=	=	=	
3 Efficiency	0.9	0.81	0.81	0.73	0.73	
4 L1 (mm)	21.6	28.45	28.45	35.25	35.25	
5 Weight	g (oz)	40 (1.41)	52 (1.83)	52 (1.83)	66 (2.33)	66 (2.33)

6 Available with Motor – L2 - Length with motor (mm)	5.4	14.1	29.2	52.7	157.5
22DCP / 22DCT / 22N78 / 24DCT	56.05	62.9	62.9	69.7	69.7
22N98	57.95	64.8	64.8	71.6	71.6
23GST2R82	62.05	68.9	68.9	75.7	75.7
25GT2R82	77.5	84.35	84.35	91.15	91.15
25GST2R82	67.55	74.4	74.4	81.2	81.2
22ECP35 / 22ECP35-2A / 22ECT35	56.6	63.45	63.45	70.25	70.25
22ECP45	66.6	73.45	73.45	80.25	80.25
22ECT48	69.6	76.45	76.45	83.25	83.25
22ECP60 / 22ECT60	81.6	88.45	88.45	95.25	95.25
22ECT82	103.6	110.45	110.45	117.25	117.25

Characteristics	Unit	R22T 2R 0 xxx		
7 Shaft Bearings		Ball bearing		
8 Maximum Continuous Torque	Nm (oz-in)	0.5 (70.8)	0.7 (99)	1.2 (170)
9 Maximum Continuous Power	W	15	10	5
10 Maximum Intermittent Torque	Nm (oz-in)	0.6 (85)	0.9 (127)	1.5 (212)
11 Maximum Radial Force @ 10 mm from mounting face	N (lb)	65 (14.6)	100 (22.5)	120 (26.9)
12 Maximum Axial Force	N (lb)	40 (9)		
13 Maximum Press-Fit Force	N (lb)	50 (11.2)		
14 Shaft Play:				
-Radial (@ 10 mm from flange)	µm	<50		
-Axial	µm	<30		
15 Maximum Recommended Input Speed	rpm	6000	8000	
16 Operating Temperature Range:	°C (°F)	-40 to +100 (-40 to +212)		

