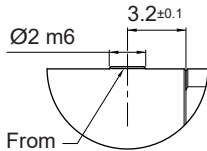
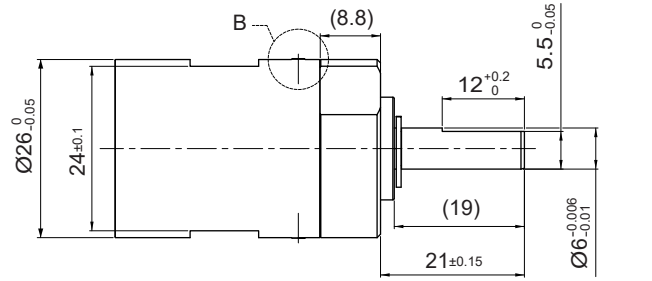
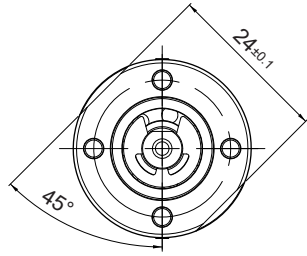


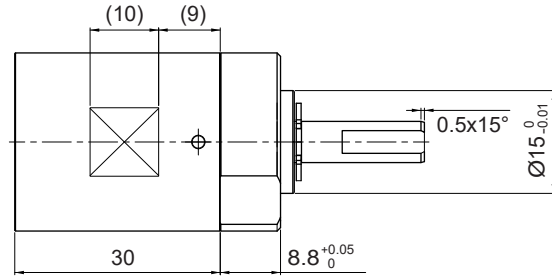
R26HT

Ø 26 mm • Planetary Gearbox • 4 Nm



2x Pin Protrusion From Internal Gear Tube
0.23 mm Max.

DETAIL B
Scale 8:1



Dimensions in mm

Dimensions in mm.

Ratio		24.1*
1	Number of Gear Stages	2
2	Direction of Rotation	=
3	Efficiency	0.85
4	Weight	100 (3.53)
5 Available with Motor – L2 - Length with motor (mm)		
	22ECT35 Ultra EC	65
	22ECT48 Ultra EC	78
	22ECT60 Ultra EC	90
	22ECT82 Ultra EC	112

Characteristics	Unit	
6	Shaft Bearings	Ball Bearing
7	Maximum Static Torque	Nm (oz-in)
8	Maximum Radial Force	5 (708)
	@ 10mm from mounting face	
9	Maximum Axial Force	N (lb)
10	Maximum Press Fit Force	180 (40.5)
11	Average Backlash @ no-load	N (lb)
12	Average Backlash @ 0.3 Nm	500 (112.5)
	Shaft Play:	1°
13	-radial	2°
14	-axial	µm
15	Maximum Recommended Input Speed	µm
16	Operating Temperature Range:	rpm
		18,000
		°C (°F)
		-30 to +100 (-22 to +212)

*Other gear reduction ratios and motor combinations can be made available upon request.

