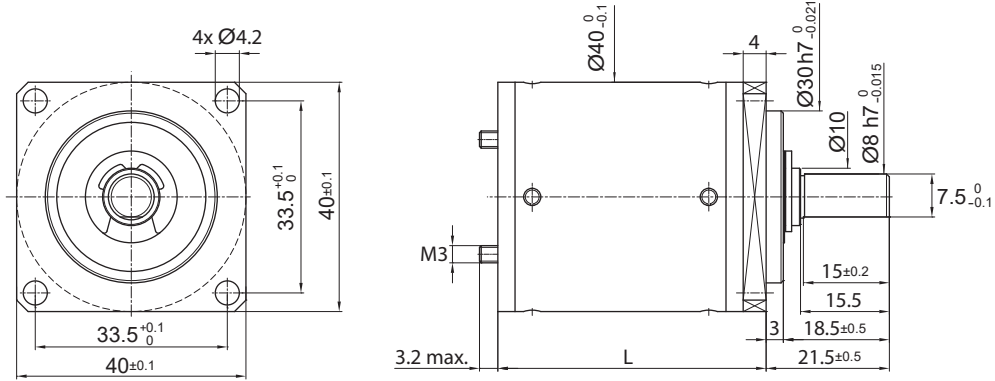


**R40**

Ø 40 mm • Planetary Gearbox • 10 Nm



Dimensions in mm

Ratio	3.56	5.6	15.2	24	54.2	85.3	134	193	303	478	753
1 Number of Gear Stages	1	1	2	2	3	3	3	4	4	4	4
2 Direction of Rotation	=	=	=	=	=	=	=	=	=	=	=
3 Efficiency	0.85	0.85	0.7	0.7	0.6	0.6	0.6	0.5	0.5	0.5	0.5
4 L (mm)	38.3	38.3	46.8	46.8	55.3	55.3	55.3	63.8	63.8	63.8	63.8
5 Weight											
g	245	245	285	285	340	340	340	400	400	400	400
(oz)	(8.642)	(8.642)	(10.052)	(10.052)	(11.993)	(11.993)	(11.993)	(14.109)	(14.109)	(14.109)	(14.109)
<b>6 Available with Motor – L2 - Length with motor (mm)</b>											
25GT82	91.75	91.75	100.25	100.25	108.75	108.75	108.75	117.25	117.25	117.25	117.25
28DT12	102.9	102.9	111.4	111.4	119.9	119.9	119.9	128.4	128.4	128.4	128.4
30GT82	101.2	101.2	109.7	109.7	118.2	118.2	118.2	126.7	126.7	126.7	126.7
35NT32/82	95.5	95.5	104	104	112.5	112.5	112.5	121	121	121	121
35GLT82	105.5	105.5	114	114	122.5	122.5	122.5	131	131	131	131

Characteristics	Unit	R40 • 0 • ...
7 Shaft Bearings		Ball Bearing
8 Maximum Static Torque	Nm (oz-in)	40 (5700)
9 Maximum Radial Force		
@ 8mm from mounting face	N (lb)	600 (135)
10 Maximum Axial Force	N (lb)	400 (90)
11 Maximum Press Fit Force	N (lb)	600 (135)
12 Average Backlash @ no-load		1°
13 Average Backlash @ 0.3 Nm		1.3°
Shaft Play:		
14 -radial	µm	≤ 10
15 -axial	µm	≤ 10
16 Maximum Recommended Input Speed	rpm	6,000
17 Operating Temperature Range:	°C (°F)	-30 to +85 (-22 to +185)

